



RAPIDS

WESTERN WHITEWATER ASSOCIATION



DECEMBER 2014

2015 Annual Banquet & Fundraiser

The WWA's Annual Fundraiser Banquette is fast approaching. The date set is Jan 17, 2014 at the Idaho Center. We encourage all members to register early for this event and set this date aside on your calendars. As members we pay dues that provide us with a Champagne toast on the New Years Day run and hamburgers/hot dogs in the parking lot later, a great pot luck on the chili run, a great BBQ on the Glens Ferry run, a day full of boat education for proper operation of our boats, a steak dinner at the confluence run, another pot luck at the Hammer Creek fishing day and a fun filled Banquet. Not to mention a newsletter, legislative and political awareness, and a good sense of camaraderie and whitewater education. We get a lot of benefits for what we are asked to pay in

dues to the club. These dues are spent on each member by roughly mid-year. Needless to say we get our monies worth out of what we put in pretty easily.

There is a Banquet



registration form in this month's rapids. The banquet is a great event and pre-registration could be given for a Christmas present or an end of year expenditure.

One way we can

contribute to keeping our activities and access to the waters that we love is by donating items for the banquet or by buying items at our fundraiser auction held during the banquet. Every year many generous businesses donate to the WWA goods and services to be auctioned off. We greatly appreciate all that has been sent our way and we ask for your continued help. The fourth quarter is closing fast for those last minute expenses, or the beginning of the year can be a good time to donate to a great cause. Either way every little bit helps. Please contact Shay White 208-888-4278, Toni Ruby 208-869-3487 or Mark Bickmore 208-371-4044 if you have a donation or would like to help, or simply need more information.

Points of Interest

- *New Year's day run is our next run!*
- *Please read Trailer information*
- *Mark Jan 17, 2014 on your calendar for Banquet*
- *Boat registrations are due*
- *Membership dues are due 01/01/2014*



MERRY CHRISTMAS
TO ALL OUR FRIENDS

Inside this issue:

BANQUET	1/3
Boat Registrations Due	4
ELECTIONS	4
TRAILER CARE	6
NEW YEAR'S DAY RUN	1

2013 New Year's Day Run

Plan on arriving at Walters Ferry boat ramp at around 9:30 a.m. Groups will head up river around 10:00 a.m. For those not familiar with this event, it is held each year on New Year's Day on the Snake River in southwestern Idaho. The run is from Walters Ferry up river through the infamous "Graveyard" stretch of the

Snake to Swan Falls Dam. Upon reaching their destination, the participants engage in the traditional "Toast to the River Gods".

There will be non-alcohol drinks for those wishing something besides champagne.

This run is not difficult, but there are several sections of the river

that are very technical. If you are a new member or are uncertain of the route, it is highly recommended that you run up with the main group or follow some one who knows the way.

We plan to have hamburgers/hot dogs in the parking lot after the run.

Questions regarding the New Year's Day Run should be sent to Randy Clagg jetboat2@westernwhitewater.org. Hope to see you there.



Tech It Out

Reprinted with the permission of proptalk.com

By Capt. Chris D. Dollar

Trailer Maintenance

Over the years I've spent a disproportionate amount of my time at boat ramps. In fact, my kayak outfitting shop is 50 feet from the Centreville ramp, so I have a front row seat to "ramp follies" that take center stage every weekend during the boating season. Recently, I watched with a mix of empathy and morbid curiosity as a boater backed his tandem trailer back down the ramp.... With his left wheel wobbling off the spindle like a slinky! His wife, bless her heart, was screaming for him :stop" but she might as well have been cheering him on. Ten feet from the water the whole wheel-hub assembly popped off. Having no other option, our hero continued on with his business, the trailer frame scraping against the concrete with a horrific pitch.

Not to be the one to cast the first stone, I've also had my fair share of boat trailer miscues, all on the minor side, thankfully. Most trailer mishaps can be avoided with simple yet important preventative maintenance, but for whatever reason, it seems a freakishly high percentage of boaters don't even do the minimum "The biggest thing we see is burned out bearings that have not been serviced regularly," says Sean Hampton, owner of Island Trailers in Grasonville MD. "You can get through many seasons (without

incident) if you take care of them regularly." Before the start of every season, you should clean all hub and bearing components, fatigue. Inspect the spindle where it was welded to the axle, as this is can be a natural weak spot.

Don't skimp on grease. Use a high-quality, lithium complex



* Bearing kit, etrailer.com

grease that meets or exceeds industry standards. Grease should provide excellent rust protection and thermal stability. If your trailer

looking for pitting on the bearings, uneven wear, rust or bluing on each cone and cup (race).

When in doubt, chuck it out. Don't gamble with any iffy part that costs a pittance compared to the agitation and potential hazards on the side of the highway. Hampton and other pros also advise you check each spindle for heat induced cracking and other signs of fatigue. Inspect the spindle where it was welded to the axle, as this can be a natural weak spot.

Don't skimp on grease. Use a high-quality, lithium complex grease that meets or exceeds industry standards. Grease should provide excellent rust protection and thermal stability. If your trailer has an enclosed hub system (such as Bearing Buddies, Sure-Lube or Super Lube), do not pump them full of



* Spindle, etrailer.com



* westmarine.com

grease. You risk blowing out the rear seal, which will allow saltwater and compromise your bearings. After trailering to the ramp, allow the hubs to cool to the ambient temperature before submerging them in water.

The second common thing repair trailer mechanics see is damage to the brake system. Keep the appropriate DOT-grade fluid in the reservoir and inspect routinely. Many of us unplug the lights prior to dunking the trailer, Hampton recommends not doing this if your trailer has disc brakes with electric lockout.

Before every trip, visually inspect the frame. Look for rust build-up, loose nuts and bolts, and any fatigue o the rollers or bunks. A freshwater rinse after every use will prolong the life of your trailer. Leaf springs should show no daylight between the leaves. With proper care, Hampton says you ought to get five to seven years out of

them.

Trailer tires are designed to carry boats and have specific load capacity. Prior to running down the road, check to ensure they're properly inflated. Treads should be crack-free, and sidewalls should show no sign of spider webs. If they do, swap them out. Don't go on the cheap, however, and use tires not rated for the weight of the trailer and boat. Also, don't mix-and match tires, such as mixing a radial with a bias ply tire. Bad move.

I'm always surprised to see how many boaters fail to carry a spare tire. That's rookie ball. Invest in a jack made to lift a boat trailer, I like a scissors-style jack. For that matter, I carry spares of almost everything, as well as a grease gun.

Continued on page 5

WVC west valley construction, LLC™
Commercial • Industrial • Agricultural



Jim McGarvin

12/2014

(208) 459-0333 • Cel (208) 871-1734

P.O. Box 1056, Caldwell, ID 83606

Fax: (208) 459-8278 • email: jim@westvalleycomplex.com

What is your UTILITY OVERPAYMENT?

March 2014



Ashley Companies since 1910

Serving the Treasure Valley

Save \$\$\$ for Boat Gas!!



See you on the river!

208-378-9445

www.ashleyheating.com
8243 W Westpark St, Boise



P O BOX 8922, BOISE ID 83707-8922
<http://www.westernwhitewater.org>

MEMBERSHIP APPLICATION

(fill in both sections for Banquet registration)

Please fill in membership information completely to update our records!

Family Membership \$35 (includes 2 votes)
Single Membership \$25 (includes 1 vote)

Name(s): _____

Address: _____

City, State and Zip: _____

Phone # _____

E-Mail _____

Do you want to receive the Rapids and club alerts by email. Alerts are time sensitive notifications.

Yes ____ **No** ____

By checking the box below I am electing to have the following information excluded from the Club Membership directory.

All personal information _____

Phone Number _____ Email _____

City and State _____

The info is for club business and your info will not be shared with non-members or for solicitation.



2015 WWA Banquet Registration
 January 17, 2015
 Idaho Center, Nampa, ID
 Doors open at 4:00 p.m.

Note: Registration Packets will be made available at the door.

Extra raffle tickets will be available for purchase at the event.

Menu subject to change

Meal Preference: (please indicate number of each)

_____ Marinated Tri Tip Steak

_____ Montrel Salmon with bay shrimp mornay sauce, garlic and scallops

Menu will also include:

Salad, Dinner Rolls / Vegetables / Potatoes / Dessert / Coffee (Decaf) & water

No Host Bar will be available

Package

Pre-pay 1/1/2015

At the Door**

_____ WWA Single Membership, \$70 \$85

_____ One Meal, 30 Raffle Tickets

_____ WWA Family Membership, \$125 \$140

_____ Two Meals, 60 Raffle Tickets

_____ Individual Meal Only \$30 \$80

_____ Dinner for Two \$60 \$80

_____ Children's Dinner \$15 \$15

_____ (age 10 & under)

_____ Family Membership \$65 \$70

_____ No meals/ 30 Raffle Tickets

_____ Single Membership \$40 \$45

_____ No meal / 15 Raffle Tickets

_____ SPONSOR TABLE \$300.00 NA

Tables will not be reserved this year unless a sponsor table has been purchased.

All sponsor tables will be in a special drawing for a WWA Banquet gun.

****Due to extra expense incurred by WWA from the caterer, all meals purchased after 1/5/2015 will be at the door price, no exceptions. This also insures that we will have sufficient food to feed everyone who has purchased meals. This year, we have established a \$5.00 "Browser Fee" for those wanting to just view the displays etc. This fee includes five raffle tickets.**

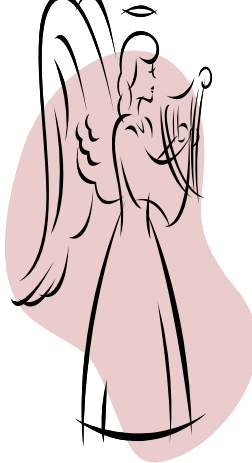
*****If you made your reservation thru PAY PAL, please bring your receipt.**



2014 ELECTION RESULTS

Elections were held at the December General Membership meeting. The results are as follows: President Randy Clagg, President Elect Shay White, Vice President Bill Dutton, Secretary/Treasurer Mark Bickmore and new directors will be Bill Bolinske, Jed Myers and Bob Gray. Thank you guys for volunteering your time..

We make a living by
what we get; we
make a life by what
we give.



WWA DUES ARE DUE.

Even if you don't plan to attend the banquet, your dues are about to expire. All dues are due January 1. Please use the left side of the form on page 3.

BE AN ANGEL!

Volunteer!

MERRY CHRISTMAS

THE COVER SHOP

Specializing in marine canvas, custom covers & upholstery work.



10% DISCOUNT ON ALL NEW WORK FOR
CURRENT WESTERN WHITEWATER
ASSOCIATION MEMBERS.

May 2014

Two locations to serve you:

THE COVER SHOP

205 E.5th

Meridian, ID. 83642

(208) 888-5779

THE COVER SHOP II

4948 Chinden Blvd.

Garden City, ID 83714

(208) 378-2850

www.coversyou.com

Would you like to rent the WWA Satellite phone for your trip? Contact the Whites at 208 888-4278 or email at western-whitehousetirepair@q.com

Have a good story to tell about fishing, hunting or anything else you do with your boat. Please submit all your photos and stories to the Rapids to share with the rest of the club.

BOAT REGISTRATION DOLLARS FUND BOATING ACCESS AND ENFORCEMENT IN IDAHO

It's that time of year again. All boat registrations expired December 31, 2014. If you plan to go on the New Year's day be sure you have a 2015 registration sticker.

The State of Idaho has a unique system in place that allows boaters to decide what county receives their registration dollars. Boaters are encouraged to designate the county where they choose to boat most frequently.

Boaters are also able to designate a second county. Designating certain counties will allow those counties to receive 85% of the registration fee for boating improvement projects and marine law enforcement activities. All registered boats are required to pay an additional \$10 which is deposited into the Idaho Invasive Species Fund.

New boats can be numbered and registered by visiting a local boat reg-

istration vendor, a county assessor's or motor vehicle office or the Idaho Department of Parks and Recreation (IDPR). For information call IDPR at 208-334-4197.

PACIFIC POWERTRAIN
www.pacificpowertraininc.com

Supplying Quality Marine Components to the Welded Aluminum Boat Industry

10038 Snake River Rd, Asotin, WA 99402
Phone: 509.243.7840



Tech It Out

Continued from Page 2

Double check your truck-trailer connections: receiver, pin and clip, hitch ball and coupler. Five minutes could save you a major headache or prevent a tragic accident.



* Trailer hub assembly etrailer.com

Safe Trailering Tips from Boat US

*****Boatus.org/guide*****

- Learning to back a trailer can be rough on the blood pressure — yours and the other people at the ramp waiting to launch their boats. Practice backing the trailer in the quiet of your driveway or in an empty parking lot. Tip push the bottom of the car's steering wheel in the direction you want the trailer to go.
- Keep a tire stop handy. Leave the car's engine running in case you need power quickly, and don't forget your parking brake!
- When you get to the ramp after time on the water, good manners are important. If there are other boaters launching or leaving, you must wait your turn. When your turn comes, be ready to move quickly. Start by getting all of your gear ready to take off the boat, and get your boat ready to

go on the trailer. If you have the option, let someone off the boat to get the trailer etc the water while you or the other people aboard take the gear of at the ramp.

- Before you back down the trailer, make sure the trailer lights aren't connected to the tow vehicle. If the trailer has a tilting trailer bed, put it in the up position. Slowly back the trailer into the water, and use the boats bow and stern lines to line the boat up with the trailer.
- Attach the winch cable to the boat, and start cranking. After you have the boat all the way on the trailer, attach the safety chains and pull the boat trailer forward. <Make sure your engine is raised first.
- Once you've cleared the ram

area, make sure all loose gear is stowed, attach the tie-down straps, and reconnect the trailer lights to the tow vehicle, and hit the road.

- While many people drive the boat onto the trailer, it isn't advised. Using the engine to assist trailering on the ramp bed, can lead to debris sucked into the engine, and cause an accident!
- Make sure you drain all water from the boat—the bilge, the live well, trailer lights, etc. Trailer boats leading cause of the spread of invasive species. Make sure your boat is cleaned thoroughly before you launch it again, particularly if you go to a suspected body of water.

Safe Trailering Tips from Boat US

*****Boatus.org/guide*****

- The first thing you should remember when towing a trailer is that you are towing a trailer. Slow down! Reducing speed gives you more time to react and reduces the strain on the vehicle towing the trailer.
- Swing wider at corners so your trailer doesn't hit the curb and remember to allow extra space when you pass other cars.
- The weight of a trailer dramatically affects braking, so leave more distance than you normally would between your car and the car in front of you
- Rely on lower gears rather than brakes to reduce speed when driving downhill.
- Once you have safely arrived at the launch ramp, if it is crowded, don't despair; use the extra time to prepare your boat and trailer before your turn to launch. Make sure the lower unit is raised to avoid scraping; install the drain plug; release the securing straps; disconnect the trailer's lights; and rig a line so the boat doesn't drift away after it is launched.
- If you don't have bearing protectors, hubs are cool.



The article above is a reprint from Boat US magazine. It required printing as it was written. It is obviously for small boats. But most of it applies to both.



WWR

Western Whitehouse
Repair LLC

westernwhitehousetirepair@q.com

Give Us A Call

Rick White and Sons

3317 N. Curt Drive
Meridian, ID 83646

Phone: 208-888-4278

Cell: 208-870-9865

Fax: 208-887-5428

JAN 2015

Aluminum Fabrication & Repair
For all your Jet Boat Needs





P O BOX 8922

Calendar of Events

JAN 1, 2015 New Years

Day Run Walter's Ferry

FEB 23, 2015 Chili Run

Walter's Ferry

MAR 16, 2015 Glenns Ferry Run

APRIL 2015 Salmon River Run (date to be announced)

May , 2015 Weed Run (date to be announced)

May , 2015 Payette River Run (date to be announced)

JUNE , 2015 Skills Day (date to be announced)

SEPT 13, 2015 Confluence Run

OCT 26, 2015 Hammer Creek Run

All dates are subject to change. In the event of a change, we will notify ASAP.

General Meetings are the second Monday of the Month at Canyon Creek Restaurant Nampa ID



We're on the web!

<http://www.westernwhitewater.org/>

Check us out on Facebook

Internet Addresses

Idaho Current Streamflows: (New Address) 5-01

http://water.usgs.gov/id/nwis/current?type=flow&group_key=NONE&search_site_no_station_nm= (enter it once and bookmark it!)

Idaho Power Streamflow Information: (03-02)

<http://www.idahopower.com/h2o/idastream.cfm>

Riverflow Information:

<http://www.idwr.state.id.us/planpol/techserv/flows.htm>

Addresses and Telephone Numbers

Salmon River Reservations: Slate Creek Ranger Station: 208-839-2211

Hells Canyon Power Boat Reservations: General information: 509-758-0616

Reservations must be made online.

River & Reservoir Levels: Bureau of Reclamation: 208-334-9134

Bliss Dam Outflows: Idaho Power (Call weekdays only) 208-388-2255